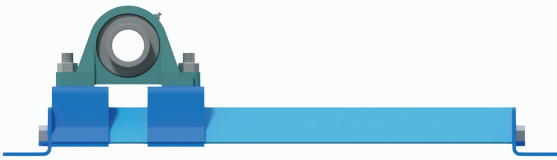


TAKE-UP FRAMES

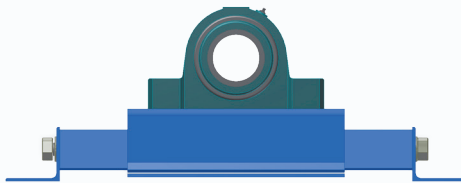
Regular Duty Top Mount



Part #: $\frac{PBLD}{\text{bearing size}}$ - $\frac{207}{\text{travel}}$ - $\frac{18}{\text{travel}}$

- 1 7/16" - 2 15/16" 2 bolt pillow block bearings
- Protected threaded rod
- Standard travel 12" - 24"

Heavy Duty Top Mount

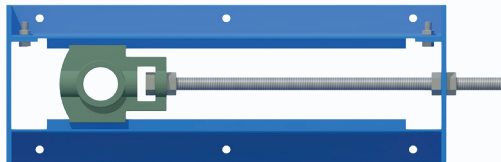


Part #: $\frac{PSHD}{\text{bearing size}}$ - $\frac{307}{\text{travel}}$ - $\frac{18}{\text{travel}}$ - $\frac{2b \text{ or } 4b}{2 \text{ or } 4 \text{ bolt bearing}}$

- 1 15/16" - 4 15/16" 2 or 4 bolt pillow block bearings
- Acme rod standard
- Protected threaded rod
- Standard travel 12" - 48"

PSXHD also available for extreme manual take-up applications

Slotted Side Mount



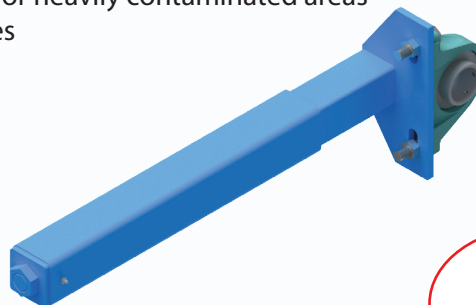
Part #: $\frac{LTU}{\text{bearing size}}$ - $\frac{207}{\text{travel}}$ - $\frac{18}{\text{travel}}$

- Designed with a lower profile than top mount for compact installations
- Standard uses narrow slot take-up bearings, wide slot bearing frames are available.
- Center pull threaded rod

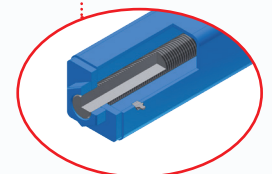
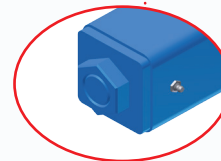
Tele-Take Telescopic Take-up

- 1 7/16" - 3 7/16" pillow block bearing
- Slotted holes for multiple bearing sizes
- In-line bearing mount also available
- Completely sealed for heavily contaminated areas
- Grease packed tubes

Grease Coupling provides quick and easy lubrication of internal parts



Anti-seize coil rod



Luff Industries Ltd.
235010 Wrangler Road
Rocky View, (Calgary) Alberta, T1X 0K3

TF: 1.888.349.LUFF (5833)

P: 403.279.3555

F: 403.279.5709

Conveying Performance

info@luffindustries.com
www.luffindustries.com