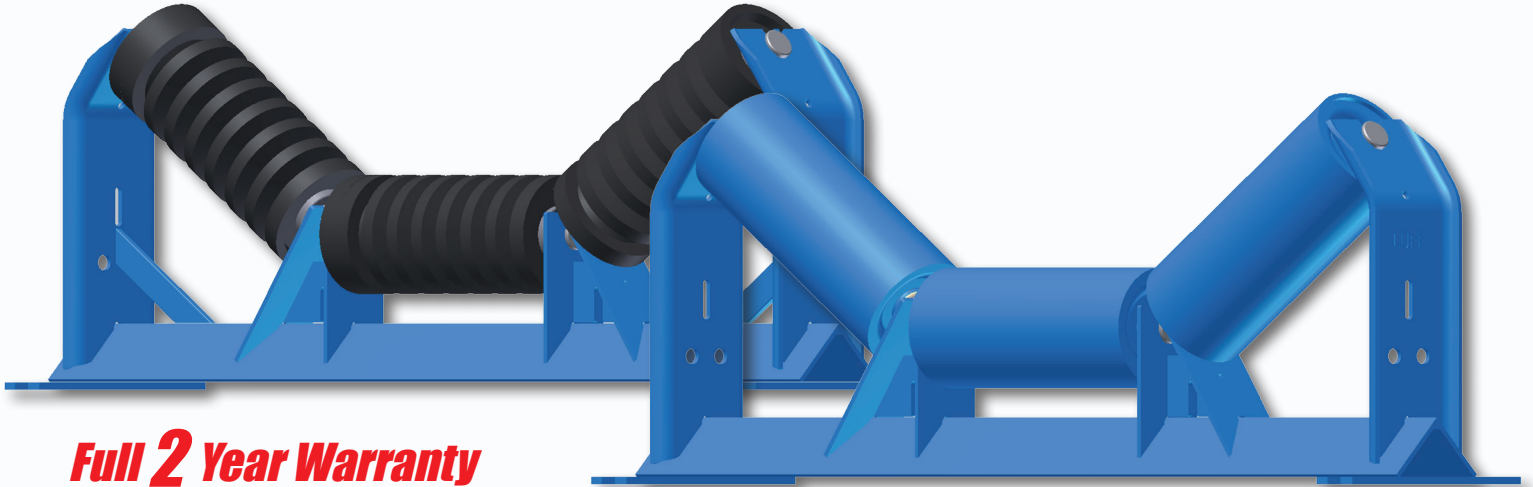




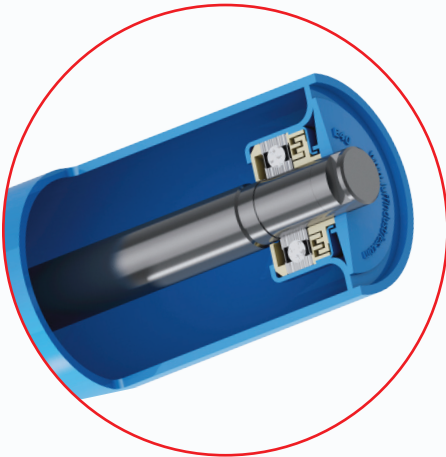
# **CEMA F IDLERS - 5600 SERIES**

***Built for Heavy Duty Application***



***Full 2 Year Warranty***

- Available in 6", 7", 8" and 10"
- Steel Endcap and Triple Labyrinth Seal
- Standard High Moisture Seal & Anti-lock Shield
- 6310 Bearing
- Oversized Shaft-Turned Down to 50mm
- Standard and customer rollers available



High Moisture Seal (HMS) & Anti-lock Shield (SAL) are standard on all CEMA E Idlers



**Luff Industries Ltd.**  
235010 Wrangler Road  
Rocky View, (Calgary) Alberta, T1X 0K3

TF: 1.888.349.LUFF (5833)  
P: 403.279.3555  
F: 403.279.5709



***Conveying Performance***

[info@luffindustries.com](mailto:info@luffindustries.com)  
[www.luffindustries.com](http://www.luffindustries.com)