



Power of Polymer



Durability Meets Innovation: Luff's patented polymer endcap technology delivers unmatched conveyor idler performance by combining high-strength, corrosion-resistant polymer with maintenance-free bearings. The smooth, pressed-in design eliminates sharp edges, reducing belt wear and extending equipment life.

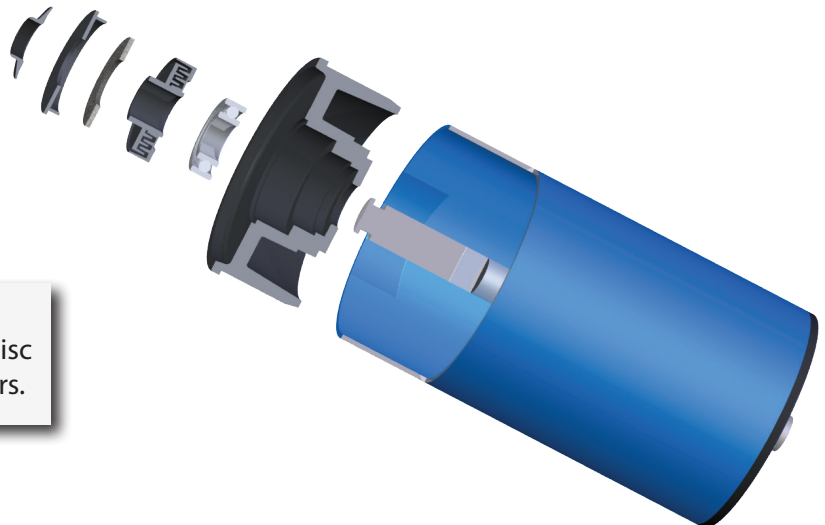
Sealed for Life: A triple labyrinth seal and oil-saturated felt ring are ultrasonically welded into the endcap, providing long-lasting protection from contaminants and moisture, with sealed-for-life bearings that require no maintenance.

Corrosion Protection Inside & Out: Non-welded components allow for complete paint coverage of the shell, offering superior corrosion resistance. The polymer material further reduces heat transfer, preserving grease viscosity and promoting long-term reliability.

Efficiency in Harsh Environments: Optional polymer-based anti-lock shields and moisture seals improve performance in wet or troublesome applications, helping reduce downtime and maintenance costs.



Anti-lock Shield/High
Moisture Seal polymer disc
available for all Luff Idlers.



Conveying Performance