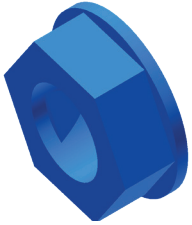
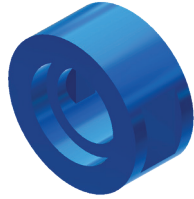


## Retrofit Rollers



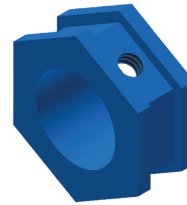
0.9375" HEX  
NO SHOULDER



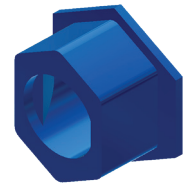
PIONEER



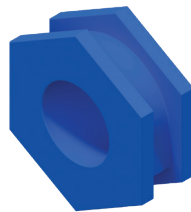
1.25" HEX  
NO SHOULDER



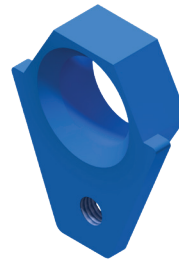
1.125" HEX  
1.250" HEX



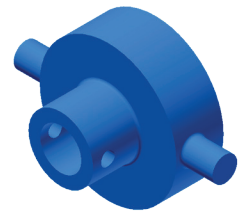
FORANO



2" HEX  
(HEX/HEX & HEX/ROUND)



2" HEX with LOCKING TAB



LIMBEROLL

**Seamless Integration:** Easily retrofit any style of steel or impact roller with Luff's full line of precision-engineered adapters, no need to replace existing frames.

**Premium Performance:** Enjoy the benefits of Luff's high-quality rollers, including sealed-for-life bearings and triple labyrinth seals, in your current setup.

**Moisture Protection:** Optional High Moisture Seal available on all retrofits for enhanced durability in wet or corrosive environments.



### WE RETROFIT ALL MANUFACTURERS ROLLERS, INCLUDING:

FMC	Precision Pulley & Idler (PPI)
Nordstrong	Bucyrus
Assinck	Melco
Superior Industries	Haak
Stephens-Adamson	Precismeca
Joy Global	Rexnord
Continental Conveyor	Douglas
Canada	Innovayor
Sandvik	Enduride
Power Screen	Limberoll