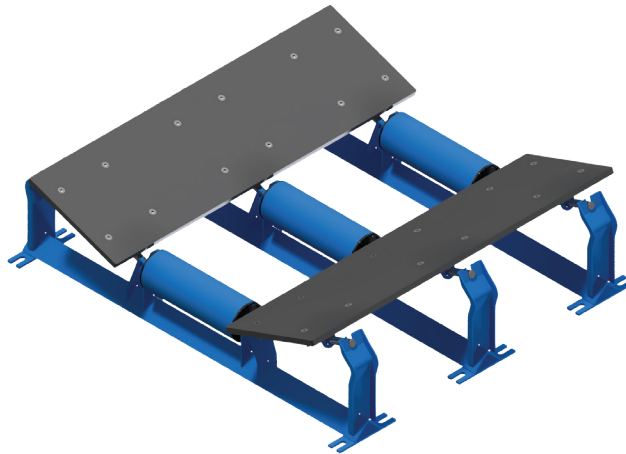


## Slider Beds

### **Built Tough.**

Constructed for maximum strength and durability, Luff slider beds are made to thrive in demanding environments, from standard material handling to the most punishing applications.



**Standard Trough Frame Compatibility:** Slider beds are designed to integrate effortlessly with standard trough frames, making installation fast and frustration-free.

**UHMW Wear Panels:** Ultra-durable UHMW panels reduce friction, resist abrasion, and keep your conveyor running smoothly.

**Custom Lengths Up to 8 Feet:** Custom lengths up to 8 feet, so your system gets the perfect fit, every time.

**Skirting-Ready for Zero Spillage:** Optimized for use with skirting systems, slider beds help contain material and control dust.

Slider Bed Front View



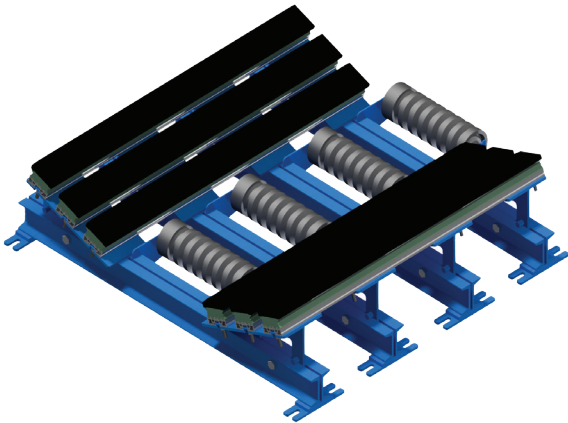
Slider Bed Side View



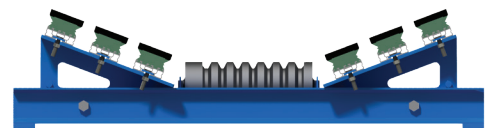
## Impact Slider Beds

### Custom Designed. Field Ready.

Luff's experienced in-house engineering team collaborates with you to design and manufacture slider beds that match your specific requirements, ensuring quick, hassle-free installation on-site.



Impact Slider Front View



Impact Slider Side View



**Heavy-Duty Impact Frames:** Engineered for maximum durability, our rugged impact bed frames absorb shock and support your belt through the harshest load zones.

**Urethane Bars with UHMW Tops:** Impact bars combines energy-absorbing urethane with a UHMW surface to reduce belt wear while withstanding impact.

**Standard Lengths to Fit Your Flow:** Available in 18", 48", 60", and 72" lengths.

**Friction Down. Performance Up.:** With center impact rolls to reduce belt drag and minimize heat build-up and bar wear.

