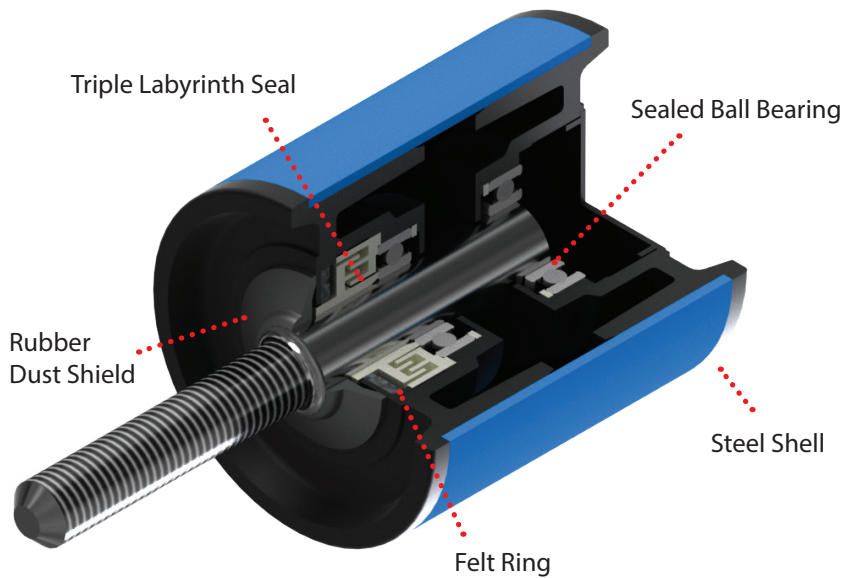




Steel Guide Rollers



Durable Steel Construction with Advanced Sealing:

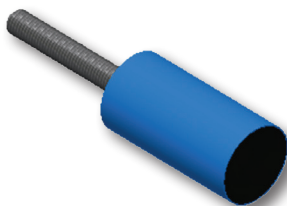
Built with a conventional straight-sided steel shell and equipped with sealed ball bearings plus Luff's Triple Labyrinth Seal for maximum protection against dust, water, and debris, extending service life in demanding environments.

Corrosion-Resistant, Fully Adjustable Design:

Features a full-length threaded shaft for easy height adjustments and electroplated for superior rust resistance, ensuring long-term reliability and simplified installation.

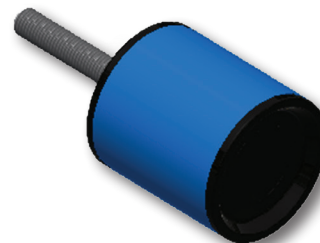
Compact Solution for Tight Spaces:

The 2SGR model is purpose-built for confined areas, offering dependable belt guidance without sacrificing performance.



2SGR

- » Contains two 6205 sealed ball bearings with a Luff Triple Labyrinth Seal for added protection.
- » 25 mm shaft machined & threaded to 3/4" UNC.



4SGR

- » Contains two 6205 sealed ball bearings with a Luff Triple Labyrinth Seal for added protection.
- » 25 mm shaft machined & threaded to 3/4" UNC.



Conveying Performance