

Take-up Frames

Regular Duty Top Mount



- 1 7/16" - 2 15/16" 2 bolt pillow block bearings
- Protected threaded rod
- Standard travel 12" - 24"

Part #: PBLD - 207 - 18
bearing size - travel

Heavy Duty Top Mount



- 1 15/16" - 4 15/16" 2 or 4 bolt pillow block bearings
- Acme rod standard
- Protected threaded rod
- Standard travel 12" - 48"

Part #: PSHD - 307 - 18 - 2b or 4b
bearing size - travel 2 or 4 bolt bearing

PSXHD also available for extreme manual take-up applications

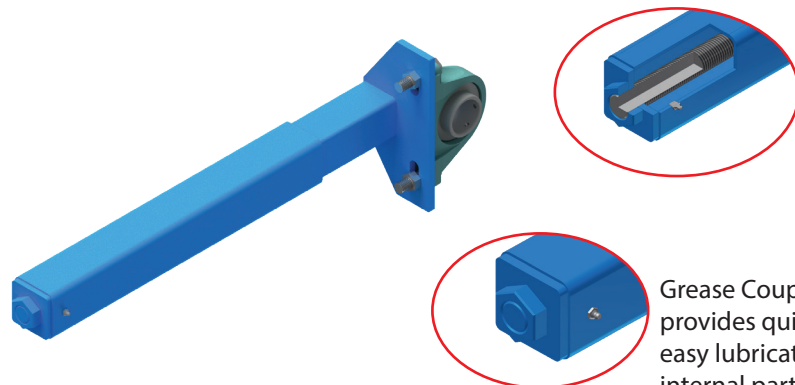
Slotted Side Mount



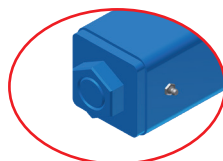
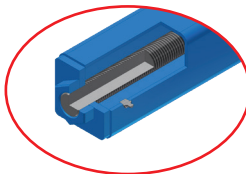
- Designed with a lower profile than top mount for compact installations
- Standard uses narrow slot take-up bearings, wide slot bearing frames are available.
- Center pull threaded rod

Part #: LTU - 207 - 18
bearing size - travel

Tele-Take Telescopic Take-up



Anti-seize coil rod



Grease Coupling provides quick and easy lubrication of internal parts

- 1 7/16" - 3 7/16" pillow block bearing
- Slotted holes for multiple bearing sizes
- In-line bearing mount also available
- Completely sealed for heavily contaminated areas
- Grease packed tubes

Part #: TT - 115 - 12
bearing size - travel