



Urethane Guide Rollers

Superior Material Performance:

Constructed from high-strength composite urethane, these guide rollers deliver exceptional durability and corrosion resistance, outlasting traditional steel rollers while reducing the risk of belt damage caused by worn, sharp edges.

Optimized Belt Tracking:

The hourglass profile ensures ultimate belt control, preventing misalignment by stopping the belt from climbing over the roller.

Fully Adjustable & Rust Resistant:

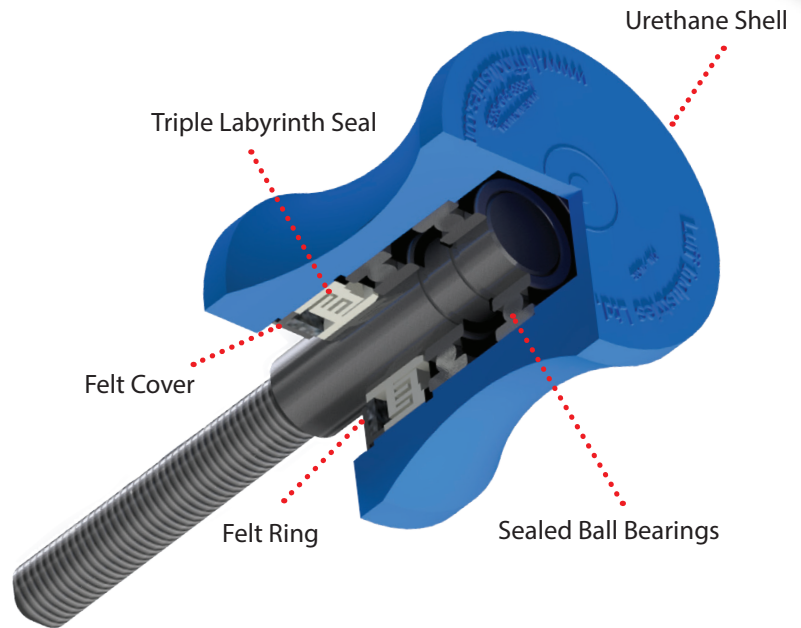
Full-length threading allows for unlimited height adjustment, while electroplated shafts offer long-term protection against rust and wear.

Quick Installation:

Designed for simple, perpendicular mounting to the belt for fast, hassle-free setup.

Heavy-Duty Application Ready:

The 6UGR-E model is built for demanding environments including mining, ship loading, and aggregate operations.



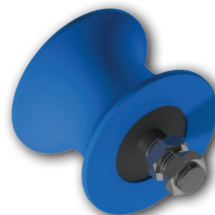
4UGR

- » Contains two 6205 sealed ball bearings with a Luff Triple Labyrinth Seal for added protection.
- » 25 mm shaft machined & threaded to 3/4" UNC.



6UGR-E

- » Contains two 6306 2RS C3 sealed ball bearings and Luff's patented Triple Labyrinth sealing arrangement.
- » 30mm shaft machined & threaded to 1 1/8" UNC.



5UGR/6UGR/8UGR Stub

- » Urethane sidewall belt stub roller available for corrugated side wall belt applications.



Conveying Performance